

TOIREX...Powerfully Small!

Power IC,
Change
the future



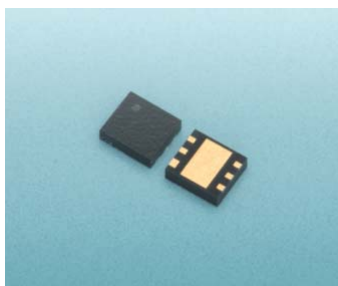
Star Striker Signed!

**Short soft-start time and fast auto-discharge added.
New series with increased functionality.**

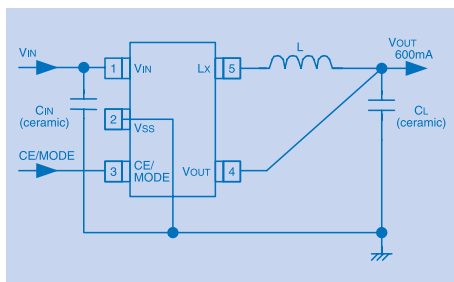
Step-Down DC/DC Converters with CL Auto Discharge and High Speed Soft Start Functions
XC9235B/XC9236B/XC9237B Series



The XC9235B/XC9236B/XC9237B series provides quick turn-on and turn-off controlled by CE (Chip Enable) pin. A built-in soft start function sets soft start time in 0.2ms (TYP.) which is shorter than 1ms (TYP.) of the previous series. The XC9235B/XC9236B/XC9237B integrate CL auto discharge function which enables the electric charge at the output capacitor CL to be discharged via the internal auto-discharge switch located between the Lx and Vss pins. When the devices enter stand-by mode, output voltage quickly returns to the Vss level as a result of this function. Two types of package, SOT-25 and USP-6C, are available.



▲USP-6C



FEATURES

P-ch Driver Transistor Built-In	: ON resistance 0.42Ω
N-ch Driver Transistor Built-In	: ON resistance 0.52Ω
Input Voltage	: 2.0V~6.0V
Output Voltage	: 0.8V~4.0V
High Efficiency	: 92% (TYP.)
Output Current	: 600mA
Oscillation Frequency	: 1.2MHz, 3.0MHz (±15%)
Maximum Duty Cycle	: 100%
Control Methods	: PWM (XC9235) PWM/PFM Auto (XC9236) PWM/PFM Manual (XC9237)

Soft-Start Circuit Built-In

Current Limiter Circuit Built-In (Constant Current & Latching)

Low ESR Ceramic Capacitor Compatible

Packages : SOT-25, USP-6C

CL High Speed Discharge (XC9235B/XC9236B/XC9237B Series)

High Speed Soft Start (XC9235B/XC9236B/XC9237B Series)

*Performance depends on external components and wiring on the PCB.

TOIREX

TOREX SEMICONDUCTOR(S)PTE LTD

60 Kaki Bukit Place #05-17/18 Eunos Techpark Singapore 415979 Tel:65-6745-1352 Fax:65-6741-0389
E-mail: tsp@torex.com.sg

TOREX SEMICONDUCTOR LTD (Head Office)

8F Sakuranihonbashi Bildg. 1-13-12 Nihonbashikayabacho Chuo-Ku Tokyo 103-0025 Japan Tel:81-3-5652-8730 Fax:81-3-5652-8731

www.torex.co.jp/english/

